

Sheet

Ano-Sil Anodised

The extreme durability, corrosion resistance and light-fastness of the anodic finish provide an attractive metallic, easy to maintain effect that will last for many years.

Satin Brushed

This machine-polished brushed effect gives a directional grained appearance that provides uniformity of finish while also helping to remove surface defects.

Mill

An economic, versatile and widely used semi-bright natural (untreated) aluminium finish. In situations where aesthetic considerations are important, some sort of surface finishing is normally applied. Surface finishing can include powder coating, anodising (to suitable grades) and mechanical polishing.

- Specification: Anodised 5005
- Specification: Satin Brushed / Mill 1050A
- Sheets supplied with one good side only
- When ordering please use the GA code
- Panel sizes can vary +/- 1%
- Anodised items: Good face one side only. Shade variations may occur
- Jig marks on full size sheets are normally no more than 12mm in from the edges

Ano-Sil

matf anodised sheet (one good side)



Order code	Panel size mm	Material thickness mm
GA SA10	2500 x 1250	1.0
GA SA20	2500 x 1250	1.5

Satin brushed sheet

(one good side)



Order code	Panel size mm	Material thickness mm
GA B1412	2500 x 1250	1.2
GA B1420	2500 x 1250	2.0

Mill sheet

(one good side)



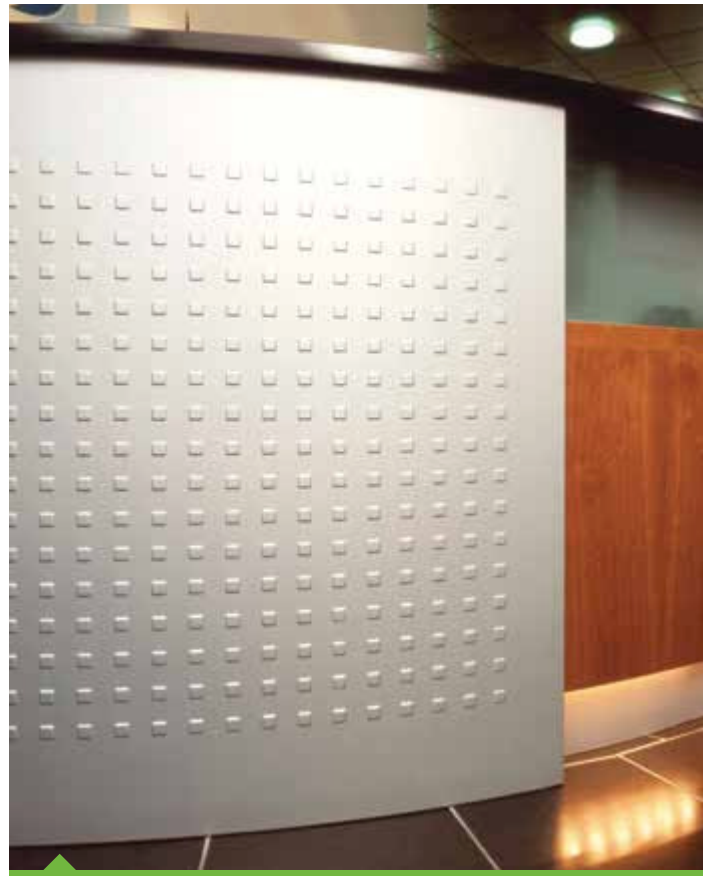
Order code	Panel size mm	Material thickness mm
GA1505	2000 x 1000	1.2
GA1537	2500 x 1250	1.2
GA1538	2500 x 1250	1.5
GA1507	2000 x 1000	2.0
GA1539	2500 x 1250	2.0
GA1509	2000 x 1000	3.0
GA1541	2500 x 1250	3.0



Light Reflective Values (LRV's) – Independent test results

- GA Ano-Sil Anodised: 58 LRV
- GA Mill: Within range of 35-50 LRV (values dependent on variables including direction of measurement)
- GA Satin Brush: Within range of 60-80 LRV (values dependent on variables including direction of measurement)
- BS 8300:2001 Design of buildings and their approaches to meet the needs of disabled people, Code of practice

Refer to www.goodingalum.com for details.



GA Ano-Sil



GA Satin Brushed



GA Mill

Patterned – Sensationally sensory

These contemporary aluminium textured patterns (Axis and Vertex) have a certain 'must touch' quality about them. With superior impact resistance and the ability to mask scratches and blemishes these highly decorative and practical designs are widely used on doors and other vertical cladding applications.

Features – Benefits

- **Textured surface** – Avoidance of undesirable reflections
- **Impressed designs** – Increased torsional strength and rigidity
- **Close pattern spacing** – Masking of scratches and blemishes
- **Tactile quality** – Good for the visually impaired
- **Pattern one side only** – Easily bonded to flat surfaces
- **Anodised option** – Matt finish with high optical performance
- **Mill and Anodised from stock** – Immediate availability



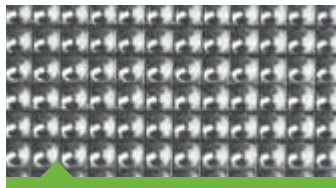
Axis: Mill finish

Order code	Panel size mm	Material thickness mm
GA AXM21	2000x1000	1.0



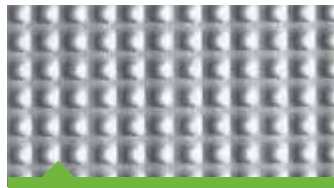
Axis: Ano-Sil anodised

Order code	Panel size mm	Material thickness mm
GA AXS21	2000x1000	1.0



Vertex: Mill finish

Order code	Panel size mm	Material thickness mm
GA VXM21	2000 x 1000	1.0



Vertex: Ano-Sil anodised

Order code	Panel size mm	Material thickness mm
GA VXS21	2000 x 1000	1.0



Fitness First, Haringey: GA VXM21

Lozenge solid surfacing

The raised lozenges of aluminium alloy, which are integral with the material surface, are as hard as Brighton Rock. Making these plates impressively strong, long lasting and visually appealing.

Features – Benefits

- **Raised lozenge design** – Slip resistance
- **Solid lozenges** – Durable and hard wearing
- **Pattern one side only** – Suitable for fixing to flat surfaces
- **Matt Anodised option** – Reduces surface glare
- **Tread pattern** – Used on ramps and stairways
- **Mill and Anodised from stock** – Immediate availability



Tread grip: Mill finish

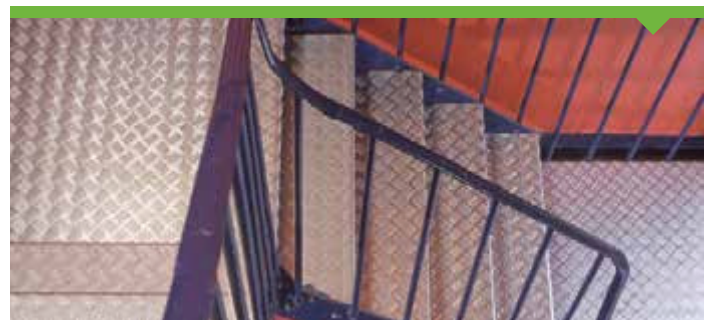
Order code	Panel size mm	Material thickness mm
GAHGP1601	2500 x 1250	2.0



Tread grip: Ano-Sil anodised

Order code	Panel size mm	Material thickness mm
GAHGPS1601	2500 x 1250	2.0

Metro Video, London: GA HGP1601



“ We use your products in fitness clubs and find your service second to none ”

Mark Coleman, Admiral Construction Services Ltd

new

Order online @ www.goodingalum.com

Information Hotline **020 8692 2255**